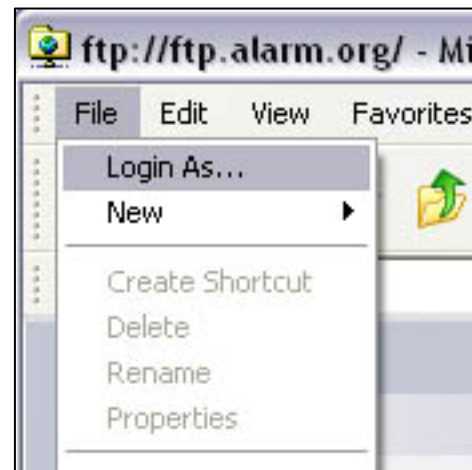
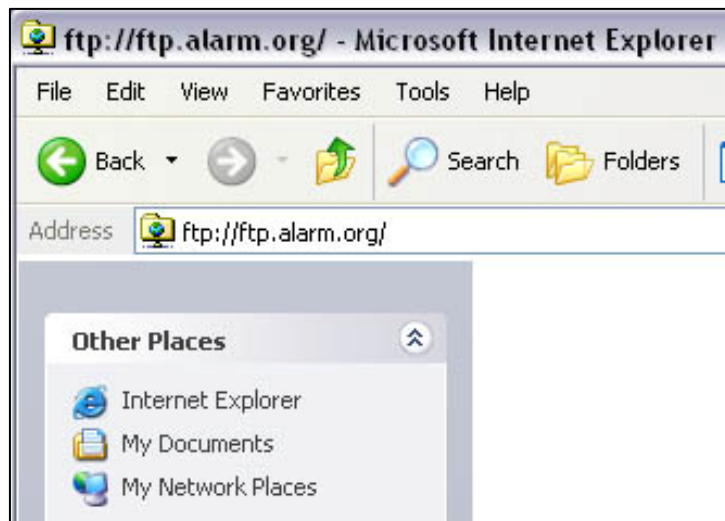


## Connecting to NBFAA FTP site with Internet Explorer

1. Open Internet Explorer.
2. In the address bar type: [ftp.alarm.org](ftp://ftp.alarm.org)
3. The site will come up. It will look blank. No folders will be visible until you login.
4. To login go to the upper left and <click> File. Then <click> Login as...
5. Under username type (case sensitive): **nbfaaftp**
6. Under password type (case sensitive): **access**
7. Open Windows explorer and drag and drop to Internet explorer. When you are done close Internet Explorer.



If you connect using an FTP client you would just use the username and password given above and log onto the site to copy your files up.

If you are having any problems connecting, please contact:

Geneva Stimac  
Graphic and Web Specialist  
(888) 447-1689 ext. 211  
GenevaS@alarm.org